

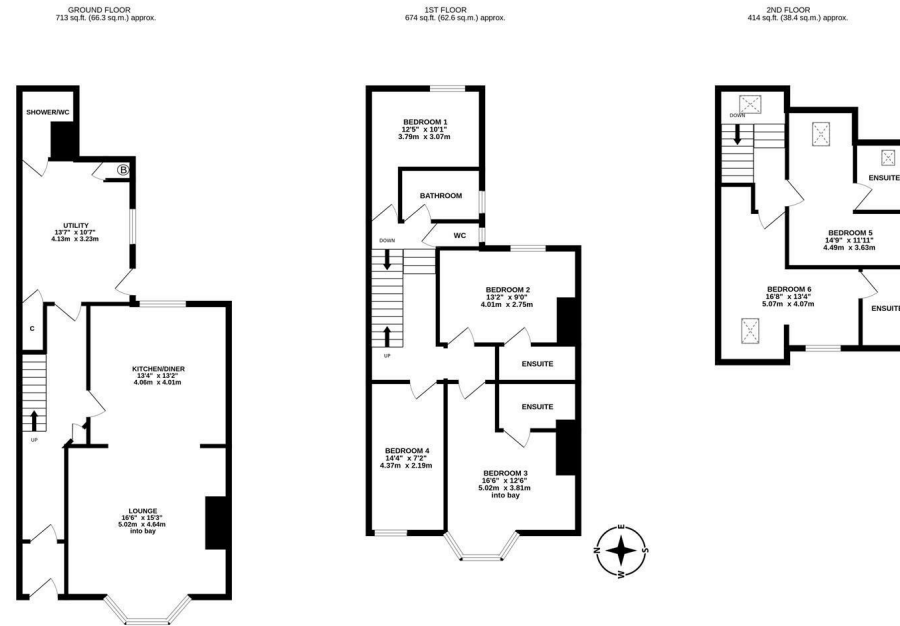
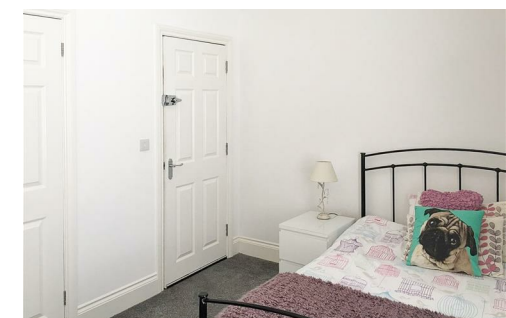


****AVAILABLE JULY 2026** **WEEKLY CLEANER INCLUDED** **£115PPPW** **6 BEDROOMS/ 6 BATHROOMS** **FURNISHED**** A spacious terraced house ideally located on Brighton Grove, Fenham. Found in an ever popular location, walking distance to the city centre, close to public transport links and a range of local eateries this great property will make the ideal home for student sharers!

Boasting in excess of 1,800 Sq. ft and with a full HMO Licence, the accommodation briefly comprises; entrance porch through to hallway; open plan reception to the front, with lounge area including a 65" TV, open to a spacious kitchen/diner with appliances; separate utility at the rear of the ground floor with door to the rear yard; shower room WC also found on the ground floor; 1st floor comprises four double bedrooms, two of which benefiting from en suite shower rooms; individual bathroom accessed via the landing as well as separate WC; 2nd floor leads to two further double bedrooms, both with en suite shower rooms and Velux style windows. Externally there is a private yard to the rear with a fitted bike rack and also on street parking to the front. Complete with double glazed windows, gas central heating and available on a fully furnished basis.

Available to rent to a group of individual sharers, this property also benefits from a weekly cleaner, included in the rental price. There are also CAT6 cable ports in every bedroom, as well as boosters on each floor ensuring strong and stable internet connectivity.

Available 11th July 2026 | £115pppw/ £2,990pcm | Weekly Cleaner Included | Mid Terraced House | 1,801 Sq. ft (167.3 m2) | Six Double Bedrooms | Four En Suites | Ground Floor Shower Room | 1st Floor Bathroom & WC | Open Plan Lounge | Kitchen/Diner | Utility Room | Private Rear Yard | Three Floors | On Street Parking | Great Location | Furnished | DG & GCH | Council Tax Band: C | EPC Rating: D



£2,990 PCM

IMPORTANT NOTE: These particulars and the descriptions and measurements herein do not constitute representation and whilst every effort has been made to ensure accuracy, this cannot be guaranteed.

